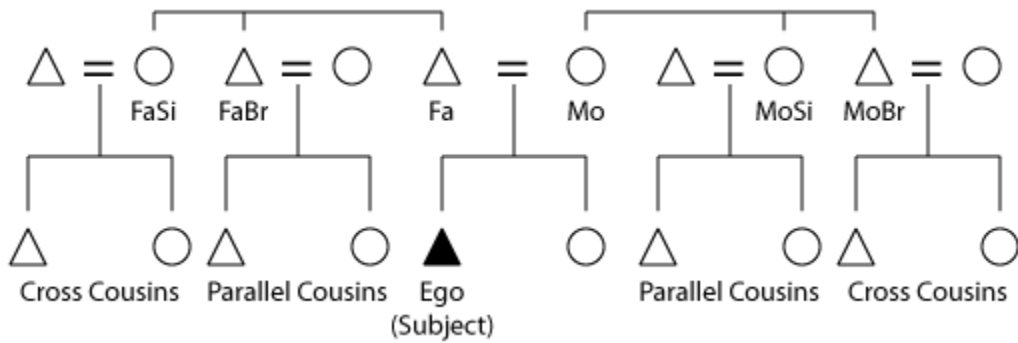


The classic form of social organization charting in anthropology is the kinship chart, which usually looks something like this:



Unless you are charting kin relations for your project, your social organization charting will probably not look at all like the example above. The nature of your social organization chart depends on the nature of your research and the participants. The symbols you use and the format you choose are up to you. The only requirement is that you include a legend or description of what your symbols mean. Again, feel free to be creative in the way(s) you attempt to capture the density and complexity of human relations in a simple chart...